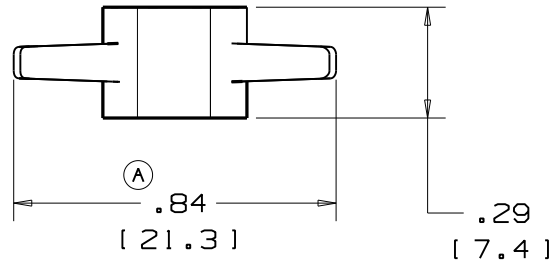
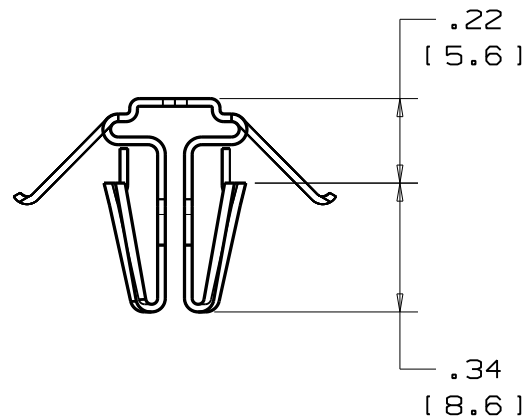


REV.	MODIFICATION.	DATE	DRN
01	PRODUCTION RELEASE	02/02/16	SFH




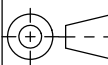
#### NOTES:

1. RECOMMENDED ASSEMBLY HOLE SIZE 8.0MM(0.31")
2. RECOMMENDED PANEL SHEET THICKNESS 0.8-2.6MM
3. MAX CABLE TIE WIDTH 7.92MM
4. DIMENSIONS IN BRACKETS ARE "MM"
5. STANDARD PACK 500PCS



PART NUMBER	MATERIAL
SSCTH01	SUS304

NOTES: 1. DIMENSIONAL TOLERANCES:  
.XX +/- .02 [ .5 ]  
.XXX +/- .010 [ .25 ]

 <i>industrial fastening components</i>		ALL DIMENSIONS IN mm GENERAL TOLERANCES $\pm 0.25$ UNLESS OTHERWISE STATED 1 DECIMAL PLACE $\pm 0.25$ 2 DECIMAL PLACES $\pm 0.10$ ANGULAR $\pm 1^{\circ}$		THIRD ANGLE 	
MATERIAL: SEE TABLE				COLOUR: SEE TABLE	
DESCRIPTION: <b>SUS304 CABLE TIE MOUNT</b>				PART No: SEE TABLE	
DRG No: 012-006		PROJECT NUMBER: EU12-0020		Mass:(g)	SHEET SIZE A4
DRN SFH	DATE 03/02/12	CHKD TC	DATE 03/02/12	SCALE NTS	SHEET No. 1 OF 1