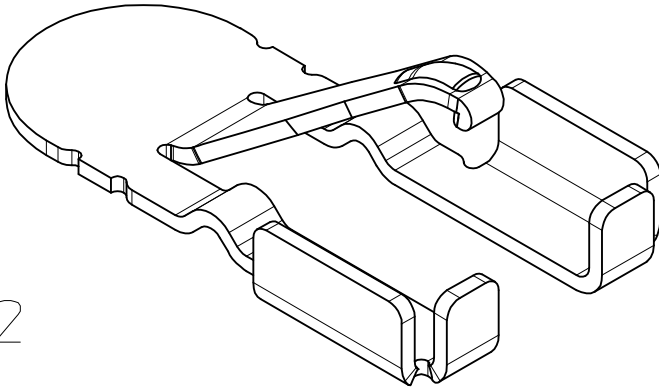
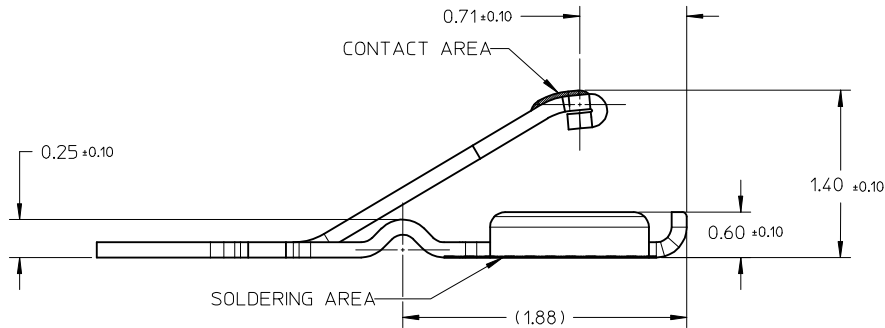
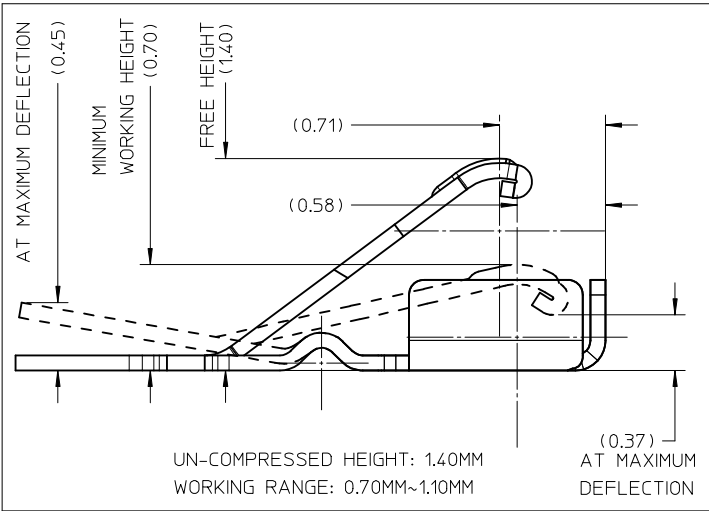
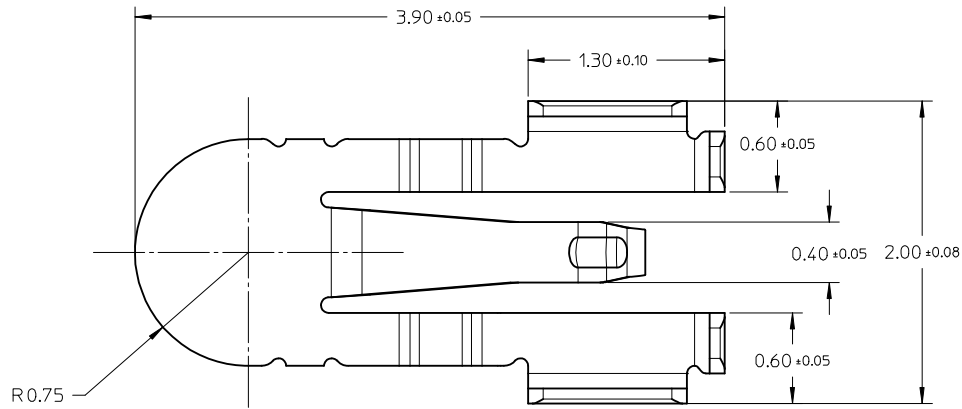


THIS DOCUMENT IS THE PROPERTY OF SINOHUA ENGINEERING SOLUTIONS.THE CONTENTS ARE CONFIDENTIAL AND CONSTITUTE TRADE SECRETS PROPRIETARY TO SINOHUA ENGINEERING SOLUTIONS.  
NEITHER THIS DOCUMENT NOR ITS CONTENT SHALL BE DISCLOSED TO ANY UNAUTHORIZED PERSON,COPIED OR PUBLISHED WITHOUT SINOHUA ENGINEERING SOLUTIONS'PRIOR WRITTEN CONSENT.

DIMENSION STYLE  
MM ONLY

REV.	MODIFICATION.	DATE	DRN
01	PRODUCTION RELEASE	02/02/16	SFH



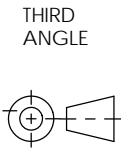
P/N: M1053840002

NOTES:  
PRODUCT COMPLIANT TO ROHS DIRECTIVE 2011/65/EU  
AND ELV DIRECTIVE 2003/53/EC.

DO NOT SCALE



ALL DIMENSIONS IN mm  
GENERAL TOLERANCES  $\pm 0.25$   
UNLESS OTHERWISE STATED  
1 DECIMAL PLACE  $\pm 0.25$   
2 DECIMAL PLACES  $\pm 0.10$   
ANGULAR  $\pm 1^\circ$



DESCRIPTION:  
**SPRING CLIP**  
STAINLESS STEEL  
NI UNDER PLATING OVERALL:  $2\mu\text{m}$  MINIMUM  
SOLDERING AREA: GOLD FLASH  
CONTACT AREA:  $0.50\mu\text{m}$  Au MINIMUM

MATERIAL: SEE TABLE		COLOUR: SEE TABLE		PART No: SEE TABLE	
DRG No: PROT-M12		PROJECT NUMBER: EU12-0020		Mass:(g)	SHEET SIZE A4
DRN SFH	DATE 03/02/12	CHKD TC	DATE 03/02/12	SCALE NTS	SHEET No. 1 OF 1