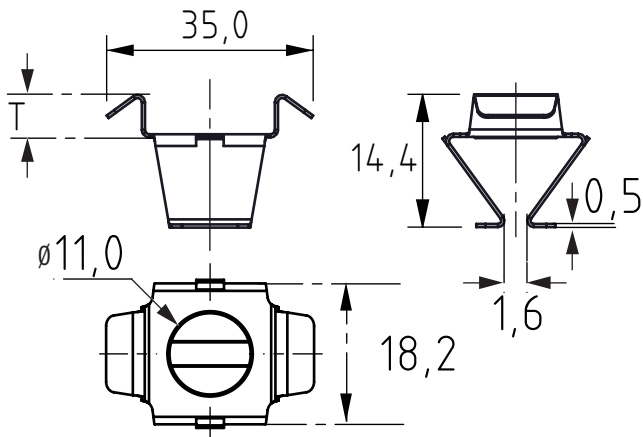


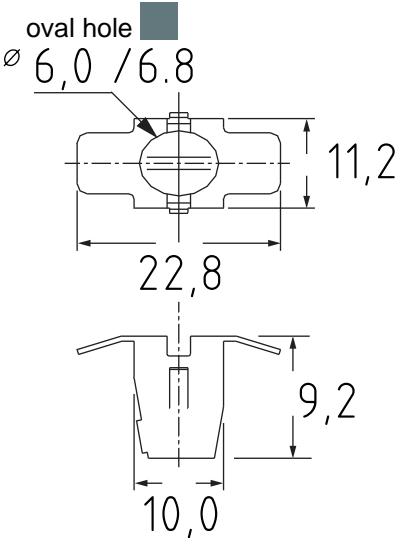
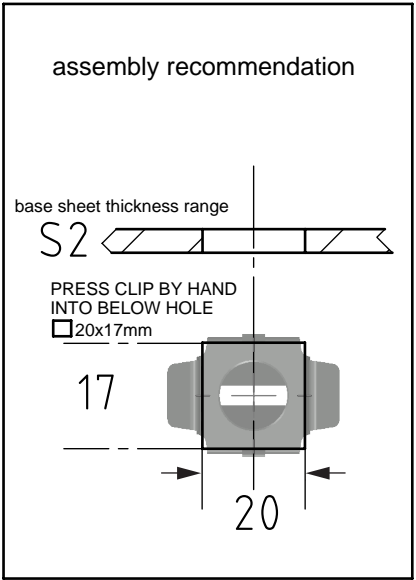
THIS DOCUMENT IS THE PROPERTY OF SINOHUA ENGINEERING SOLUTIONS.THE CONTENTS ARE CONFIDENTIAL AND CONSTITUTE TRADE SECRETS PROPRIETARY TO SINOHUA ENGINEERING SOLUTIONS.  
NEITHER THIS DOCUMENT NOR ITS CONTENT SHALL BE DISCLOSED TO ANY UNAUTHORIZED PERSON,COPIED OR PUBLISHED WITHOUT SINOHUA ENGINEERING SOLUTIONS'PRIOR WRITTEN CONSENT.

REV.	MODIFICATION.	DATE	DRN
01	PRODUCTION RELEASE	02/02/16	SFH



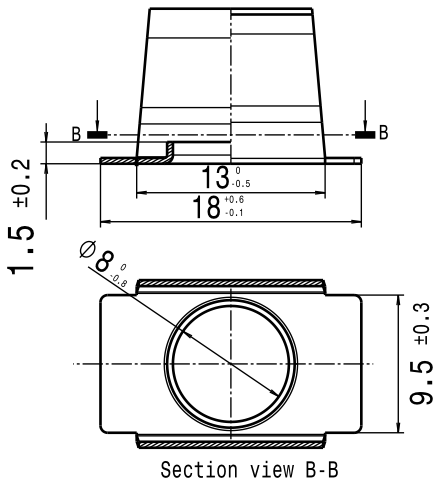
Article#	T	S2
CCR16-1	2.2	0.9-1.7
CCR16-2	3.1	1.6-2.8
CCR16-3	4.6	2.6-4.0

STEEL,SILIVER ZINC FLAKE  
STAINLESS STEEL IS AVAILABLE,SPECIAL ORDER



Article# D7285103161

Recommend mounting hole: 11.3x10.2mm



Article# 06705101100

Recommend mounting hole: 14x11.3mm



SNAP LOCK FOR HIGH PRODUCTIVITY

